

SAFETY NOTE

1. This appliance can be used by children aged from 8 years and above and persons with reduced physical, sensory or mental capabilities or lack of experience and knowledge if they have been given supervision or instruction concerning use of the appliance in a safe way and understand the hazards involved.
2. Children shall not play with the appliance.
3. Cleaning and user maintenance shall not be made by children without supervision.
4. If the supply cord is damaged, it must be replaced by the manufacturer, its service agent or similarly qualified persons in order to avoid a hazard.
5. **WARNING:** the drive shall be disconnected from its power source during cleaning, maintenance and when replacing parts.
6. The instructions shall state that the A-weighted emission sound pressure level of the drive is equal to or less than 70 dB(A), e.g. by writing $LpA \leq 70$ dB(A).
7. The mass and the dimension of the driven part shall be compatible with the rated torque and rated operating time.
8. The type of driven part the drive is intended for.
9. **WARNING:** Important safety instructions. It is important for the safety of persons to follow these instructions. Save these instructions.
10. Do not allow children to play with fixed controls. Keep remote controls away from children.
11. Frequently examine the installation for imbalance and signs of wear or damage to cables and springs. Do not use if repair or adjustment is necessary.
12. Watch the moving shutter and keep people away until the shutter is completely closed.
13. **WARNING:** Important safety instructions. Follow all instructions, since incorrect installation can lead to severe injury.
14. Before installing the drive, remove any unnecessary cords and disable any equipment not needed for powered operation.



Li-ion



Do not dispose of in general waste. Please recycle batteries and damaged electrical products appropriately.

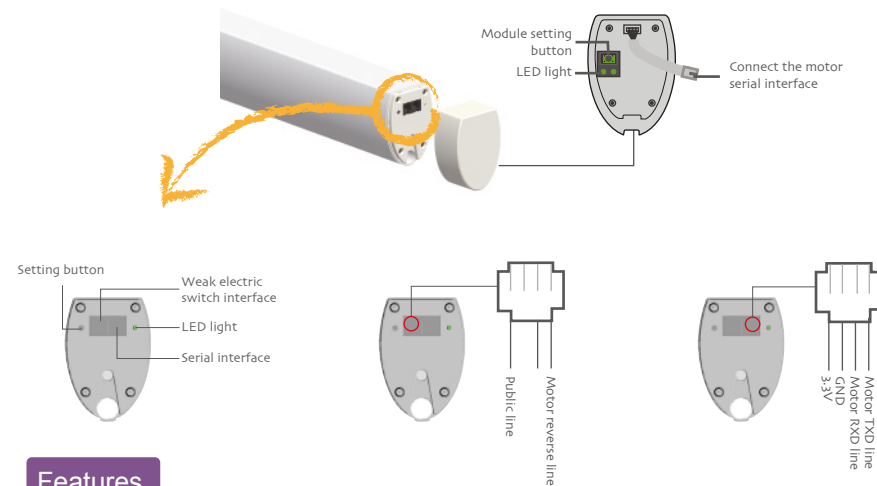
RENAISSANCE

Glide-Aside® Wired

MOTORISED CURTAIN TRACK

Motor model
DT72EV/S

Product Introduction



Features

- Electronic Limit
- Switch Direction
- Auto Limit Setting
- Run/Stop by Pulling Fabric
- Preferred Stop Position
- AC 100~240V
- Stall Protection
- Built-in Receiver
- Manual Override
- Switch Control
- Program Button



Parameter (More models and parameters are subject to the nameplate)

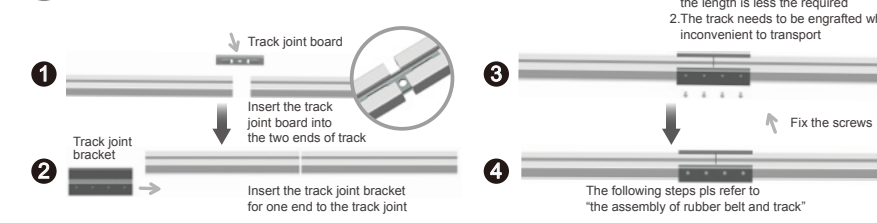
Type	DT72TV/W
Rated Voltage(V)	AC 100V-240V
Rated Torque(N.m)	1.2N.m
Open/close Speed(cm/s)	14cm/s
Emission Frequency(MHz)	433.925MHz

Caution

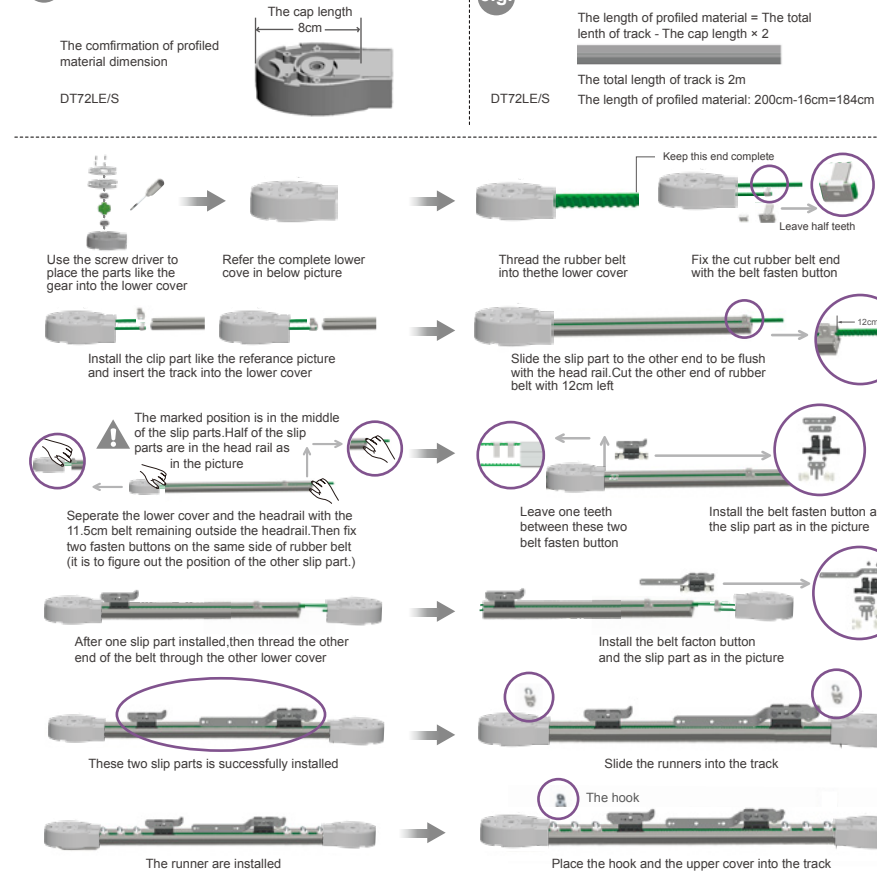
1. Do not expose motor to humid or extreme temperature conditions.
2. Do not cut the antenna and keep it clear from metal objects.
3. Do not allow children to play with this device.
4. If power cable or connector is damaged, do not use.
5. Ensure power cable and aerial is clear and protected from moving parts.
6. Cable routed through walls shall be properly isolated.
7. Before installation, remove unnecessary cords and disable equipment not needed for powered operation.
8. Installation and programming to be performed by a qualified professional, use or modification outside the scope of this instruction may void warranty.

Motor Installation

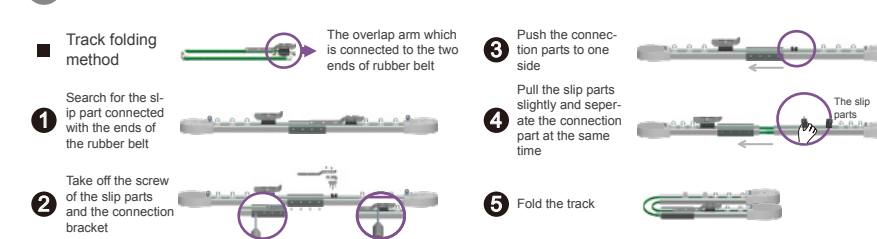
1 The joint assembly of track



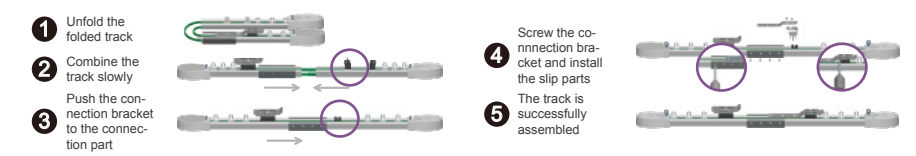
2 The assembly of rubber belt for curtain motor



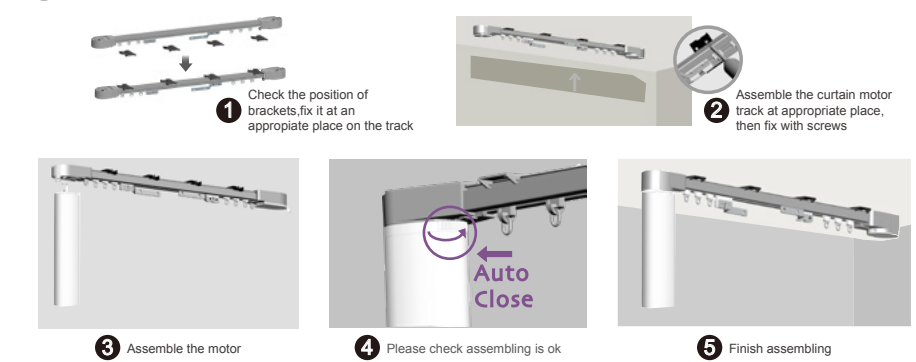
3 Folding method for joint track (for easy transit)



Restoring the track

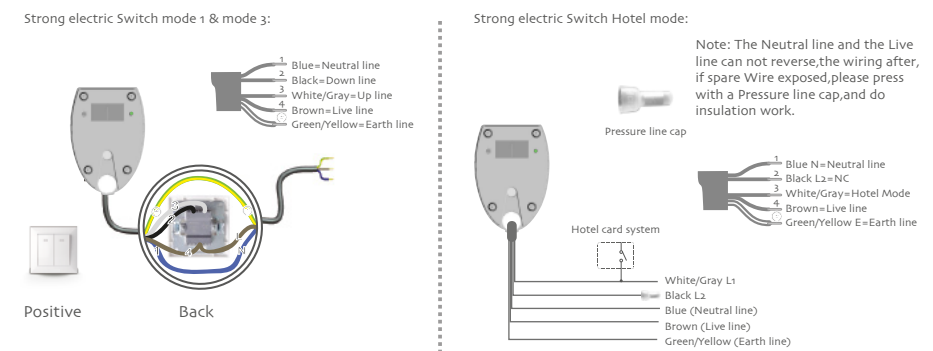


4 The installation for curtain motor



Important Safety Instructions To Be Read Prior To Operation.

Strong electric Switch installation of curtain motor



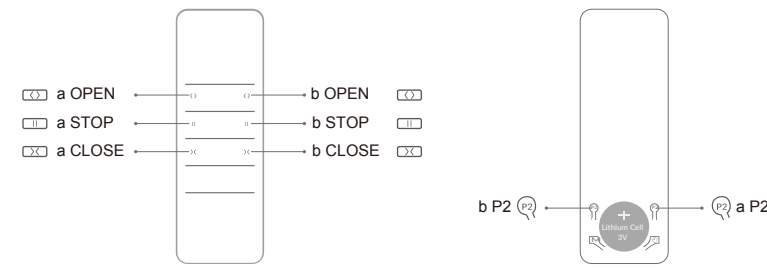
Note: Specific operation see back <Strong electric switch mode selection> action bar.

Operation note

Please read the following precautions before use:

1. Operating:
 - ① The valid interval of the emitter button is 10s, the emitter will quit the set after 10s;
 - ② The LED flashes for hint, please do the next step after the hint.
2. Set limit position:
 - ① Every time you install the motor, first set after a curtain opened limit to work properly;
 - ② After setting, with power and memory function, after each power cycle required to open or close a recovery limit;
 - ③ After replacing the track or cord to be removed for the limit, and then set the limit.
3. When the motor running without any operation, the maximum running time is 4 minutes, it will stop automatically.
4. If the emitter lost, please set up again with the new emitter.

Button Instructions



Essential Settings

The steps in factory mode must be completed to ensure proper operation.

Factory Mode

1 Pairing



After power-on, the motor flashes once, press the P1 button for 2S (1 flash) within 5S, then release button and beep once, and within 10S, press the STOP for 2S (1 flash and 3 beeps), the motor has been paired successfully.

2 Switch Rotating Direction (Optional)

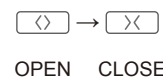
Press OPEN and motor is closed, try below to switch direction.



Press and hold OPEN and CLOSE buttons simultaneously for 2S, motor beeps 3 times, the direction has been switched successfully.

* The operation is only valid when there is no limits.

3 Setting Limits



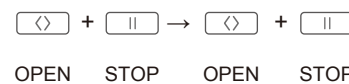
Press OPEN once, the curtain will open until stop against obstacle, then press CLOSE once, the curtain will close until stop against obstacle. The limit has been set successfully.

* Enter user mode after setting the limit successfully.

User Mode

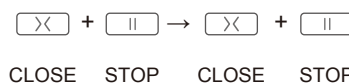
1 Adjust The Open And Close Limits

1 Adjusting the open limit



After auto limits have been set, press and hold OPEN and STOP buttons simultaneously for 5S (1 flash and 1 beep). The motor runs to the desired new open limit position, press and hold OPEN and STOP buttons simultaneously for 2S (5 flashes and 3 beeps), the new open limit is programmed successfully.

2 Adjusting the close limit

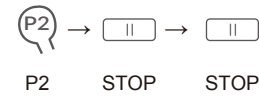


After auto limits have been set, press and hold CLOSE and STOP buttons simultaneously for 5S (1 flash and 1 beep). The motor runs to the desired new close limit position, press and hold CLOSE and STOP buttons simultaneously for 2S (5 flashes and 3 beeps), the new close limit is programmed successfully.

* In the adjust the open and close limits status, if the new limit position is not confirmed within 2 minutes or press P1 button or press the emitter P2 button, the motor automatically exits this mode and the position of the limit remains unchanged.

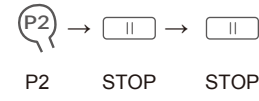
2 Add A Preferred Position

1 Set preferred position



Check limits are set. Operate the product to desired preferred position. Press P2 (1 flash and 1 beep), press STOP (1 flash and 1 beep), press STOP again (5 flashes and 3 beeps), the preferred position is set.

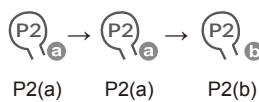
2 Remove preferred position



Press P2 (1 flash and 1 beep), press STOP (1 flash and 1 beep), press STOP again (5 flashes and 1 beep), the preferred position is deleted.

* Press STOP for 2S, the motor moves to preferred position automatically.

3 Pair / Unpair Additional Emitter



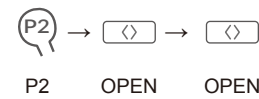
Press P2 (1 flash and 1 beep) and P2 (1 flash and 1 beep) on existing emitter, press P2 on new emitter to add (5 flashes and 3 beeps), new emitter is paired to the motor.

• Repeat same procedure will unpair additional emitter.

* (a) as existing emitter, (b) as new emitter to pair/unpair.

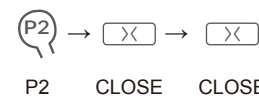
4 Speed Regulation

1 Acceleration setting



Press P2 (1 flash and 1 beep), OPEN (1 flash and 1 beep), OPEN again (5 flashes and 1 beep), the motor running speed is accelerated.

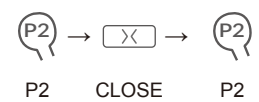
2 Deceleration setting



Press P2 (1 flash and 1 beep), CLOSE (1 flash and 1 beep), CLOSE again (5 flashes and 1 beep), the motor running speed is decelerated.

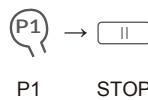
* If the motor beeps twice, it has already been the Max. or Min speed.

5 Deleting All Limits



Press P2 (1 flash and 1 beep), CLOSE (1 flash and 1 beep), and P2 (5 flashes and 1 beep), all limits are removed.

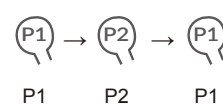
6 Run/Stop by Pulling Fabric



Press and hold P1 button for 6S (2 flashes), release button, press STOP (5 flashes and 1 beep), disable the Run/Stop by pulling fabric.

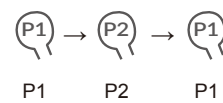
7 External Switch Modes

1 Dual button pushbutton switch mode(Factory default)



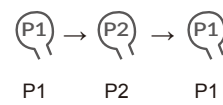
Press and hold P1 button for 6S (2 flashes), release button and beeps twice, press P2 button once (1 flash and 1 beep), then press P1 button for 2S (5 flashes and 3 beeps), the mode has been successfully switched.

2 Triple button pushbutton switch mode (DC246)



Press and hold P1 button for 6S (2 flashes), release button and beeps twice, press P2 button twice (2 flashes and 2 beeps), then press P1 button for 2S (5 flashes and 3 beeps), the mode has been successfully switched.

3 Single button pushbutton switch mode



Press and hold P1 button for 6S (2 flashes), release button and beeps twice, press P2 button 3 times (3 flashes and 3 beeps), then press P1 button for 2S (5 flashes and 3 beeps), the mode has been successfully switched.

8 Reset to Factory Mode



Press and hold P1 button for 10S (7 flashes and 3 beeps), the motor clears all settings and reset to factory status.

Quick Index

Settings	Steps	
1 Pairing	P1 (hold down 2S) → Stop (hold down 2S)	
2 Switch Rotating Direction	Open + Close (hold down 2S)	
3 Setting Limits	Open → Close	
4 Adjust The Open And Close Limits	1 Adjusting the open limit	Open + Stop (hold down 5S) → Open + Stop (hold down 2S)
	2 Adjusting the close limit	Close + Stop (hold down 5S) → Close + Stop (hold down 2S)
5 Add / Remove Preferred Position	P2 → Stop → Stop	
6 Pair / Unpair Additional Emitter	P2 → P2 → P2	
7 Speed Regulation	1 Acceleration setting	P2 → Open → Open
	2 Deceleration setting	P2 → Close → Close
8 Deleting All Limits	P2 → Close → P2	
9 Run/Stop by Pulling Fabric	P2 (hold down 6S) → Stop	
10 External Switch Modes	1 Dual button pushbutton switch mode	P1 (hold down 6S) → P2 (press once) → P1 (hold down 2S)
	2 Triple button pushbutton switch mode (DC246)	P1 (hold down 6S) → P2 (press twice) → P1 (hold down 2S)
	3 Single button pushbutton switch mode	P1 (hold down 6S) → P2 (press 3 times) → P1 (hold down 2S)
11 Reset to Factory Mode	P1 (hold down 10S)	

Troubleshooting

Issues	Possible causes	Solution
The motor has no response	Power Failure Or Incorrect Connection	Double check power and cable connections, follow wiring instructions.
	emitter battery is low capacity	Replace battery
	Radio interference / shielding	Check antenna on motor is intact and exposed. Check for possible source of radio interference.
	Out of radio control range	Try control within closer range
The motor doesn't run or starts too slowly or make loud noise	Connections are incorrect.	Check connections
	Incorrect installation or overload	Check installation or overload
The motor stops during the going open or going close.	The motor has reached the open limit or close limit	Adjust the new open limit or new close limit
	Running time exceeds 4 min	Consult the sales for more information